



Certificate of Analysis

CANNABUSINESS LABORATORIES, LLC

Customer:

Champion Hemp Farms
PO Box 40

Champion, PA 15622

Received Date **10/28/2024**

COA Released **10/30/2024**

Comments

Sample ID **241024017**

Order Number **CB241024007**

Sample Name **Organic CBD Oil 1,000mg
Chocolate Mint Flavored**

External Sample ID

Batch Number **2024-10-FSOILCM-500-001**

Product Type **Oil**

Sample Type **Oil**

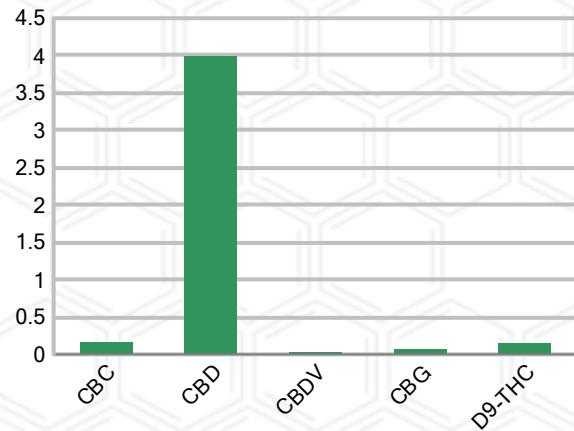
CANNABINOID PROFILE (Product Size = 1 mL)

Analyte	LOQ (%)	% Weight	mg/mL	mL/serving
CBC	0.01	0.160	1.491	1.49
CBD	0.01	3.992	37.12	37.12
CBDa	0.01	ND	ND	ND
CBDV	0.01	0.028	0.263	0.26
CBG	0.01	0.074	0.684	0.68
CBGa	0.01	ND	ND	ND
CBN	0.01	ND	ND	ND
d8-THC	0.01	ND	ND	ND
d9-THC	0.01	0.147	1.372	1.37
THCa	0.01	ND	ND	ND
Total Cannabinoids		4.401	40.93	40.93
Total Potential THC		0.147	1.372	1.37
Total Potential CBD		3.992	37.12	37.12
Total Potential CBG		0.074	0.684	0.68
Ratio of Total Potential CBD to Total Potential THC				27.16 : 1
Ratio of Total Potential CBG to Total Potential THC				0.50 : 1

SAMPLE IMAGE



CANNABINOIDS % Weight



*Total Cannabinoids refers to the sum of all cannabinoids detected.

*Total Potential CBD = (0.877 x CBDa) + CBD. *Total Potential THC = (0.877 x THCa) + THC. *Total Potential CBG = (0.877 x CBGa) + CBG.

*Total Potential THC/CBD are calculated to take into account the loss of an acid group during decarboxylation.



J. Hobgood
Laboratory Manager

SIGNATURE

Jamie Hobgood

LABORATORY MANAGER

10/30/2024 9:34 AM

DATE

This product has been tested by CannaBusiness Laboratories using validated testing methodologies and a quality system. Values reported relate only to the product tested. CannaBusiness Laboratories makes no claims as to the efficacy, safety, or other risks associated with any detected or non-detected levels of any compounds reported herein. This Certificate shall not be reproduced except in full, without the written permission of CannaBusiness Laboratories. Photo is of sample received by the lab and may vary from final packaging. The results apply to the sample as received.



Certificate of Analysis

CANNABUSINESS LABORATORIES, LLC

Customer

Champion Hemp Farms
PO Box 40
Champion, PA 15622



Sample Name: Organic CBD Oil
1,000mg Chocolate Mint
Sample ID: ~~24024017~~
Order Number: CB241024007
Product Type: Oil
Sample Type: Oil
Received Date: 10/28/2024
Batch Number: 2024-10-FSOILCM-500-001
COA released: 10/30/2024 9:34 AM

Potency (mg/mL)			
Date Tested: 10/29/2024		Method: CB-SOP-028	
Instrument:			
0.147 %	3.992 %	4.401 %	40.93 mg/mL
Total THC	Total CBD	Total Cannabinoids	Total Cannabinoids

Analyte	Result	Units	LOQ	Result	Units
CBC (Cannabichromene)	0.160	%	0.010	1.491	mg/mL
CBD (Cannabidiol)	3.992	%	0.010	37.12	mg/mL
CBDa (Cannabidiolic Acid)	ND	%	0.010	ND	mg/mL
CBDV (Cannabidivarin)	0.028	%	0.010	0.263	mg/mL
CBG (Cannabigerol)	0.074	%	0.010	0.684	mg/mL
CBGa (Cannabigerolic Acid)	ND	%	0.010	ND	mg/mL
CBN (Cannabinol)	ND	%	0.010	ND	mg/mL
D8-THC (D8-Tetrahydrocannabinol)	ND	%	0.010	ND	mg/mL
D9-THC (D9-Tetrahydrocannabinol)	0.147	%	0.010	1.372	mg/mL
THCa (Tetrahydrocannabinolic Acid)	ND	%	0.010	ND	mg/mL



J. Hobgood
Laboratory Manager

Jamie Hobgood

10/30/2024 9:34 AM

SIGNATURE

DATE

NT = Not tested, ND = Not detected; LOQ = Limit of Quantitation; <LOQ = Detected; >ULOL = Above upper limit of linearity; CFU/g = Colony forming units per 1 gram; TNTC = Too numerous to count

This product has been tested by CannaBusiness Laboratories using validated testing methodologies and a quality system. Values reported relate only to the product tested. CannaBusiness Laboratories makes no claims as to the efficacy, safety, or other risks associated with any detected or non-detected levels of any compounds reported herein. This Certificate shall not be reproduced except in full, without the written permission of CannaBusiness Laboratories. Photo is of sample received by the lab and may vary from final packaging. The results apply to the sample as received.