



Certificate of Analysis

CANNABUSINESS LABORATORIES, LLC

Customer:

Champion Hemp Farms
PO Box 40

Champion, PA 15622

Received Date **10/28/2024**

COA Released **10/29/2024**

Comments

Sample ID **241023032**

Order Number **CB241023009**

Sample Name **CBD Foot Balm with
Turmeric & Saffron**

External Sample ID

Batch Number **2024-10-FB-001**

Product Type **Topical**

Sample Type **Topical**

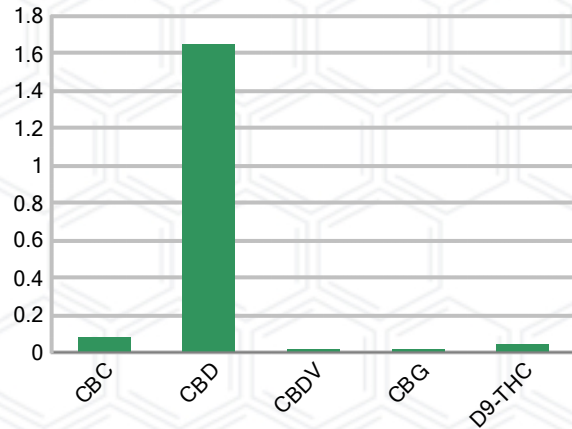
CANNABINOID PROFILE (Product Size = 2 g)

Analyte	LOQ (%)	% Weight	mg/g	mg/unit
CBC	0.01	0.079	0.794	1.59
CBD	0.01	1.653	16.53	33.06
CBDa	0.01	ND	ND	ND
CBDV	0.01	0.015	0.146	0.29
CBG	0.01	0.016	0.160	0.32
CBGa	0.01	ND	ND	ND
CBN	0.01	ND	ND	ND
d8-THC	0.01	ND	ND	ND
d9-THC	0.01	0.044	0.438	0.88
THCa	0.01	ND	ND	ND
Total Cannabinoids		1.807	18.07	36.14
Total Potential THC		0.044	0.438	0.88
Total Potential CBD		1.653	16.53	33.06
Total Potential CBG		0.016	0.160	0.32
Ratio of Total Potential CBD to Total Potential THC				37.57 : 1
Ratio of Total Potential CBG to Total Potential THC				0.36 : 1

SAMPLE IMAGE



CANNABINOIDS % Weight



*Total Cannabinoids refers to the sum of all cannabinoids detected.

*Total Potential CBD = (0.877 x CBDa) + CBD. *Total Potential THC = (0.877 x THCa) + THC. *Total Potential CBG = (0.877 x CBGa) + CBG.

*Total Potential THC/CBD are calculated to take into account the loss of an acid group during decarboxylation.



J. Hobgood
Laboratory Manager

SIGNATURE

Jamie Hobgood

LABORATORY MANAGER

10/29/2024 2:21 PM

DATE

This product has been tested by CannaBusiness Laboratories using validated testing methodologies and a quality system. Values reported relate only to the product tested. CannaBusiness Laboratories makes no claims as to the efficacy, safety, or other risks associated with any detected or non-detected levels of any compounds reported herein. This Certificate shall not be reproduced except in full, without the written permission of CannaBusiness Laboratories. Photo is of sample received by the lab and may vary from final packaging. The results apply to the sample as received.



Certificate of Analysis

CANNABUSINESS LABORATORIES, LLC

Customer

Champion Hemp Farms
PO Box 40
Champion, PA 15622



Sample Name: CBD Foot Balm with Turmeric & Saffron
Sample ID: 241023032
Order Number: CB241023009
Product Type: Topical
Sample Type: Topical
Received Date: 10/28/2024
Batch Number: 2024-10-FB-001
COA released: 10/29/2024 2:21 PM

Potency (mg/g)			
Date Tested: 10/28/2024		Method: CB-SOP-028	
Instrument:			
0.044 %	1.653 %	1.807 %	18.07 mg/g
Total THC	Total CBD	Total Cannabinoids	Total Cannabinoids

Analyte	Result	Units	LOQ	Result	Units
CBC (Cannabichromene)	0.079	%	0.010	0.794	mg/g
CBD (Cannabidiol)	1.653	%	0.010	16.53	mg/g
CBDa (Cannabidiolic Acid)	ND	%	0.010	ND	mg/g
CBDV (Cannabidivarin)	0.015	%	0.010	0.146	mg/g
CBG (Cannabigerol)	0.016	%	0.010	0.160	mg/g
CBGa (Cannabigerolic Acid)	ND	%	0.010	ND	mg/g
CBN (Cannabinol)	ND	%	0.010	ND	mg/g
D8-THC (D8-Tetrahydrocannabinol)	ND	%	0.010	ND	mg/g
D9-THC (D9-Tetrahydrocannabinol)	0.044	%	0.010	0.438	mg/g
THCa (Tetrahydrocannabinolic Acid)	ND	%	0.010	ND	mg/g



J. Hobgood
Laboratory Manager

Jamie Hobgood

10/29/2024 2:21 PM

SIGNATURE

DATE

NT = Not tested, ND = Not detected; LOQ = Limit of Quantitation; <LOQ = Detected; >ULOL = Above upper limit of linearity; CFU/g = Colony forming units per 1 gram; TNTC = Too numerous to count

This product has been tested by CannaBusiness Laboratories using validated testing methodologies and a quality system. Values reported relate only to the product tested. CannaBusiness Laboratories makes no claims as to the efficacy, safety, or other risks associated with any detected or non-detected levels of any compounds reported herein. This Certificate shall not be reproduced except in full, without the written permission of CannaBusiness Laboratories. Photo is of sample received by the lab and may vary from final packaging. The results apply to the sample as received.